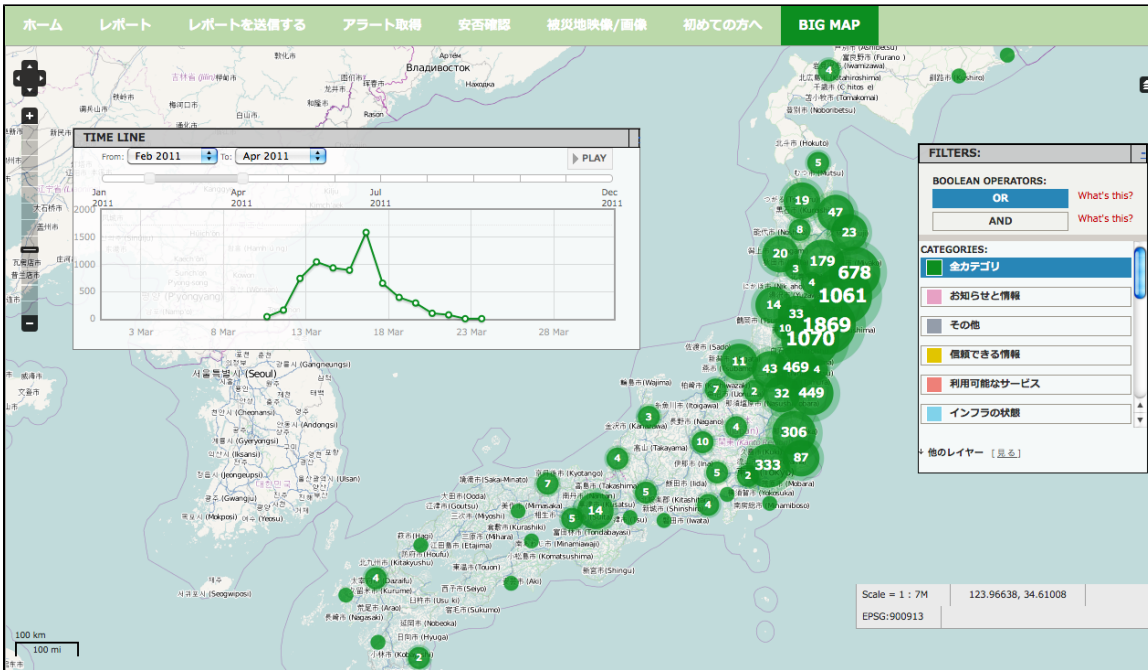


# Crisis and Emergency Response

Mapping Information for crisis or emergency response is one of the best known uses of Ushahidi and Crowdmap. Inspired by the Haiti response map, individuals and organizations including volunteer technology communities have responded with a maps around the world. There are also preparedness maps and simulation projects.



## Examples:

- Early warning
  - LERN- Liberia Early Warning and Response Network
  - University of Alberta Campus - Health and Safety Pilot Project
  - University of Alberta Campus - Emergency Response Grid
- Conflict
  - Syria Tracker
  - Women Under Siege (Syria)
  - Somalia Speaks
  - Libya Crisis Map
- Emergencies
  - Hurricane Irene
  - Sinsai.info - Tohoku Earthquake and Tsunami
  - Eq.org.nz - Christchurch Earthquake
  - GlobalFloodNews
  - skfloods.ca
  - <https://bnestorm.crowdmap.com/>
  - <http://krizovamapa.ceskatelevize.cz>
  - <http://www.pakreport.org/>

Some articles and presentations:

- <http://www.slideshare.net/moniquep/abc-ushahidi-queensland-floods-presentation>
- <http://blog.ushahidi.com/2011/03/20/canadian-mappers-prepare-for-spring-floods/>
- Food Crises
  - Red Cross Canada Work in The Sahel Region